

RISAM



In una realtà costruita e conosciuta da più di 40 anni RISAM si presenta con nuovi prodotti innovativi, sempre pronta ed attenta alle sfide che il futuro presenta.

L'esperienza da noi acquisita ci porta a sviluppare ed innovare prodotti conosciuti, quali i martinetti meccanici ampliandone la gamma e migliorando le prestazioni grazie ad un processo di ingegnerizzazione ed utilizzando i migliori materiali ed i processi produttivi ad essi applicati.

An established and well known reality for more than 40 years, RISAM offers innovative products responding to the challenges the future presents. The experience we have gained leads us to develop and innovate known products such as screw jacks, extending the range and improving performances through process engineering and using the best materials and manufacturing processes.

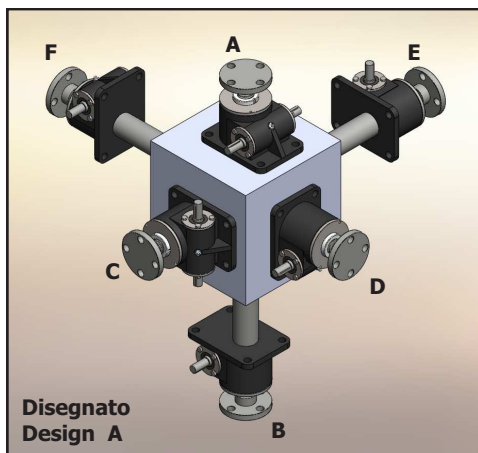
Sigla di ordinazione

Ordering detail

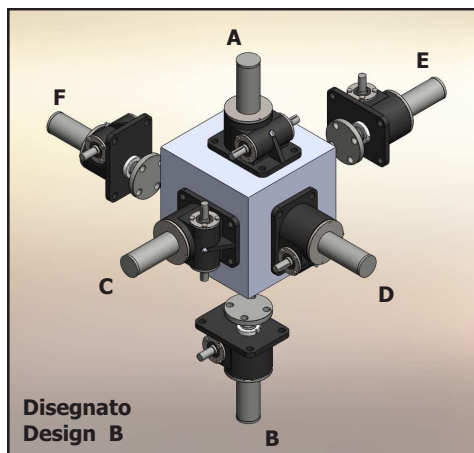
1	2	3	4	5	6	7	8	9	10	11	12	13	14
□□□	□□□□	□	□	□	□□	□□□□	□□□□	□	□□ □□□ □□	□	□□□

1 Tipo-Type _____	RSJ GSJ-GREEN	7 Corsa\Lift _____mm
2 Grandezze-Size _____	12-35-70-120-200	8 VL tipo\type 1 - 2 _____mm
	300 420-600-810	9 Rapporto\Ratio _____	N / L
	1100-1600-2100-5000	10 Asta filettata\Screw _____	Tr DxP
3 Configurazione\Configuration _____	1 - 2	11 Albero di ingresso\Input shaft _____	B (bisporgente\Both side)
4 Disegnato\Design _____	A - B	12 Antirrotazione\Anti-turn _____	V
5 Posizione di montaggio Mounting position _____	A - B - C - D - E - F	13 Opzioni\Option _____	... o disegno\drawing
6 Terminale\Head type _____	1 - 2 - 3 - 4	14 Flangia motore\Motor flange _____ UNEL-MEC

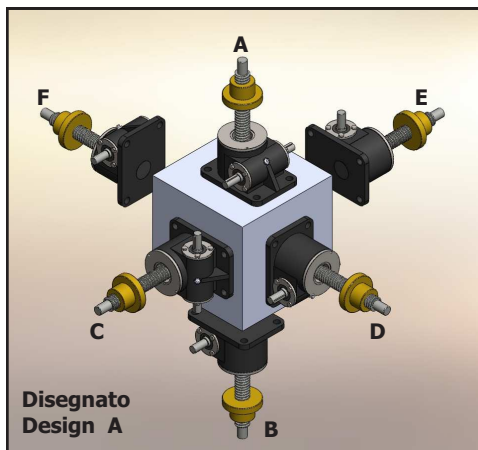
Configurazione\Configuration 1



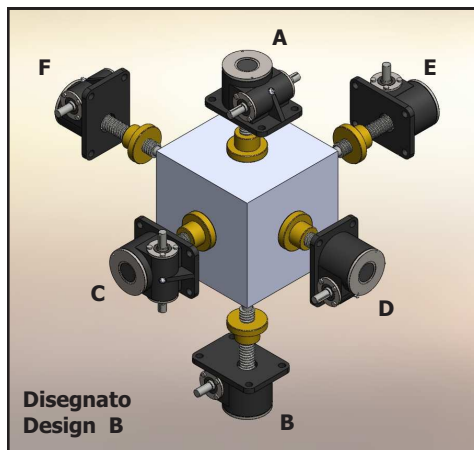
Configurazione\Configuration 1



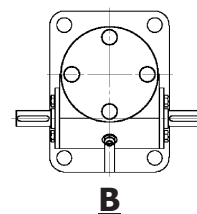
Configurazione\Configuration 2



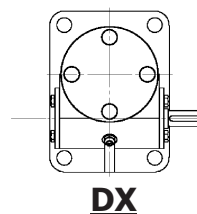
Configurazione\Configuration 2



Albero di ingresso Input shaft



Albero di ingresso Input shaft



Albero di ingresso Input shaft

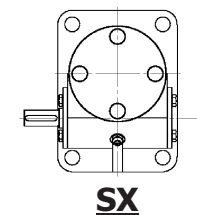


Tabella di scelta RSJ
Table of settings RSJ

Grandezza \ Size			12	35	70	120	220	300
Carico \ Load Max	kN		12	35	70	120	220	300
Asta tipo \ Threaded spindel	Tr		18x6	30x6	40x7	60x12	65x12	90x16
Rapporto Normale \ Ratio Normal	N		10/1	6/1	6/1	7,66/1	8/1	10,66/1
Spostamento asta per giro v.s.f.	mm		0,6	1,0	1,167	1,565	1,5	1,5
Rapporto Normale \ Ratio Slow	L		20/1	24/1	24/1	24/1	24/1	32/1
Spostamento asta per giro v.s.f.	mm		0,3	0,25	0,292	0,5	0,5	0,5
Momento di inerzia tipo 1 rapp. N Moment of nertia type 1 ratio N	Kg cm ²		0,101	0,783	2,237	5,259	11,94	23,43
Momento di inerzia tipo 2 rapp. N Moment of nertia type 2 ratio N	Kg cm ²		0,125	0,795	2,276	5,359	12,09	23,75
Momento di inerzia tipo 1 rapp. L Moment of nertia type 1 ratio L	Kg cm ²		0,099	0,561	1,699	4,084	9,44	19,60
Momento di inerzia tipo 2 rapp. L Moment of nertia type 2 ratio N	Kg cm ²		0,109	0,563	1,702	4,094	9,46	19,63
Materiale carter \ Housing material	UNI		3052	4544	4544	4544	4544	4544
Peso carter \ Weight housing	Kg		1,3	7,4	16,4	26,7	36,3	71
Peso asta \ Weight screw	Kg/m		1,86	4,49	8,21	17,97	25,24	41,43

Grandezza \ Size		420	600	800	1100	1600	2100	5000
Carico \ Load Max	kN	420	600	800	1100	1600	2100	5000
Asta tipo \ Threaded spindel	Tr	100x16	120x16	140x20	160x20	190x24	220x28	380x28
Rapporto Normale \ Ratio Normal	N	10,66/1	10,66/1	12/1	12/1	19/1	17,5/1	*
Spostamento asta per giro v.s.f.	mm	1,5	1,5	1,667	1,667	1,263	1,599	*
Rapporto Normale \ Ratio Slow	L	32/1	32/1	36/1	36/1	*	*	*
Spostamento asta per giro v.s.f.	mm	0,5	0,5	0,556	0,556	*	*	*
Momento di inerzia tipo 1 rapp. N Moment of nertia type 1 ratio N	Kg cm ²	55,81	108,9	318,1	428,6	*	*	*
Momento di inerzia tipo 2 rapp. N Moment of nertia type 2 ratio N	Kg cm ²	56,31	110,0	325,3	431,3	*	*	*
Momento di inerzia tipo 1 rapp. L Moment of nertia type 1 ratio L	Kg cm ²	44,09	88,38	275,7	346,1	*	*	*
Momento di inerzia tipo 2 rapp. L Moment of nertia type 2 ratio L	Kg cm ²	44,14	88,50	279,5	346,4	*	*	*
Materiale carter \ Housing material		UNI4544	DIN1681	DIN1681	DIN1681	*	*	*
Peso carter \ Weight housing	Kg	88	178	*	550	*	*	*
Peso asta \ Weight screw	Kg/m	52,16	77,30	104,2	138,7	195,3	261,5	918,2

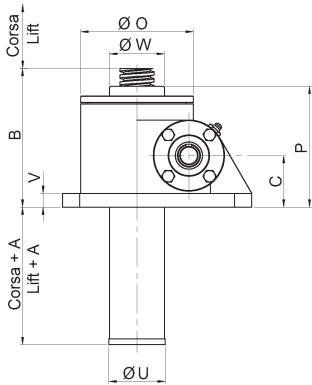
* = a richiesta \ on request

UNI-3052 = G-AISiCu4

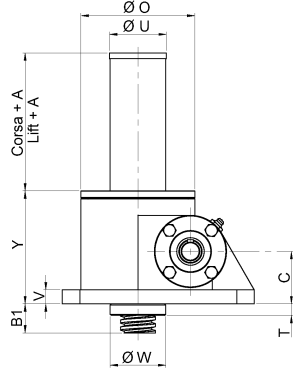
UNI-4544 = G-GS-600-3

DIN 1681 = GS-52

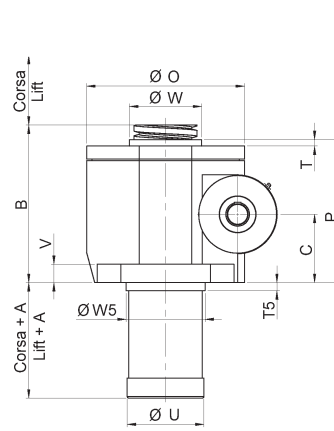
Grandezza\Size 12-420 A



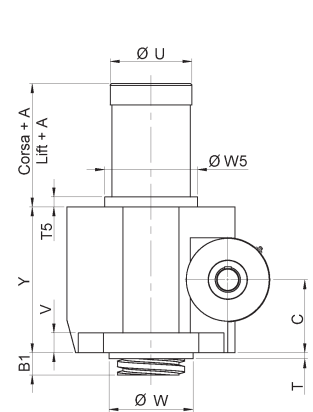
Grandezza\Size 8-420 B



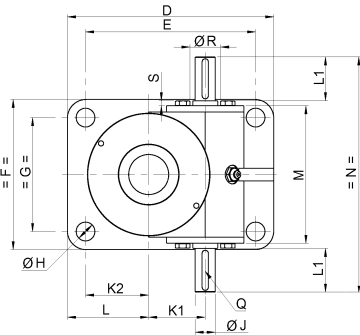
Grandezza\Size 600-800 A



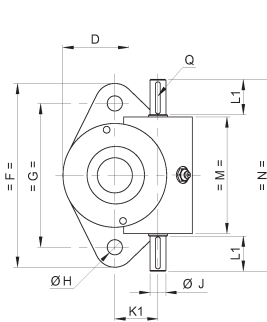
Grandezza\Size 600-800 B



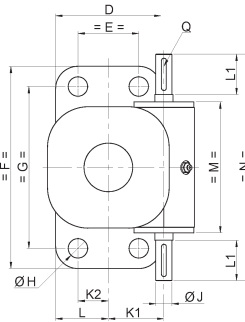
Grandezza\Size 35-400



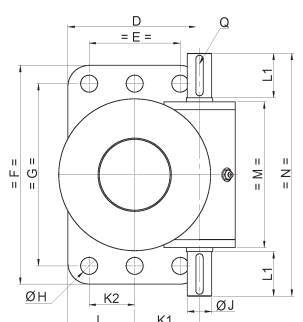
Grandezza\Size 12



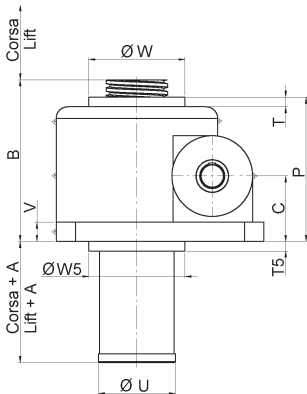
Grandezza\Size 600



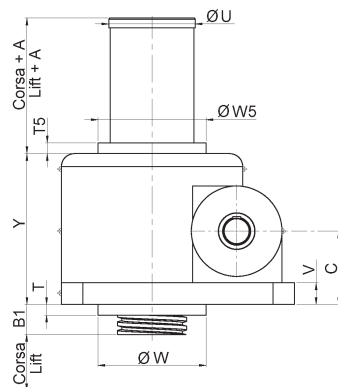
Grandezza\Size 800



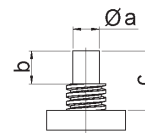
Grandezza\Size 1100-1600 A



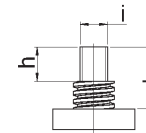
Grandezza\Size 1100-1600 B



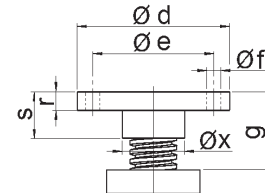
Testa\Head 1



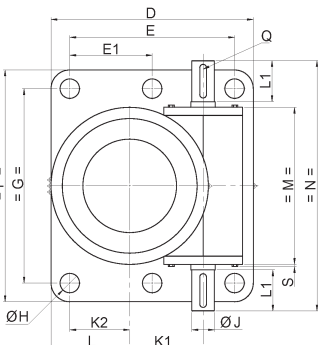
Testa\Head 3



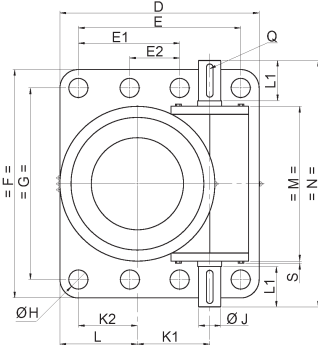
Testa\Head 2



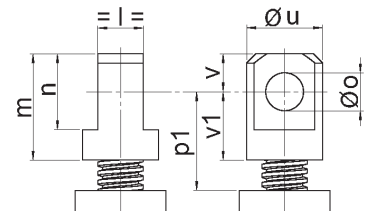
Grandezza\Size 1100



Grandezza\Size 1600



Testa\Head 4

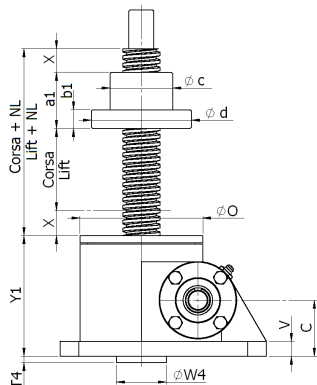


Grandezza \ Size		12	35	70	120	220	300	420	600	820	1100	1600	2100	5000
Asta/Spindel	Tr DIN103	Tr 18x6	Tr 30x6	Tr 40x7	Tr 60x12	Tr 65x12	Tr 90x16	Tr100x16	Tr120x16	Tr140x20	Tr160x20	Tr190x24	Tr220x28	Tr380x28
A		20	20	20	20	20	20	20	20	80	75	80	-	-
B		90,5	120,5	154	180	202	254	270	300	360	445	475	-	-
B1		18,5	23,5	24	30	26	37	30	40	50	45	30	-	-
C		32	45	61,5	70	87	102	115	130	155	170	194	-	-
D		81,5	165	212	235	295	350	430	260	330	540	660	-	-
E		-	135	168	190	240	280	360	150	225	440	560	-	-
E1		-	-	-	-	-	-	-	-	-	220	330	-	-
E2		-	-	-	-	-	-	-	-	-	-	170	-	-
F		115	120	155	200	215	260	280	500	540	620	700	-	-
G		90	90	114	155	160	190	210	400	455	520	610	-	-
Ø H		9	14	17	21	28	35	35	48	45	52	52	-	-
Ø J		10 k6	16 k6	20 k6	25 k6	28 k6	34 k6	38 k6	40 k6	60m6	60 m6	70 m6	-	-
K1		27	45,2	56,2	66,8	72,5	97	120	137	160	196	225	-	-
K2		-	50,5	58,5	64	95,5	95,5	135,5	75,5	113	160,5	210,5	-	-
L		32,5	65	80	86	112,5	130	170	130	165	210	255	-	-
L1		22	-	-	47	52	60	80	100	110	110	110	-	-
M		73	111	132	185	214	221	265	324	360	420	490	-	-
N		120	190	228	280	322	355	430	560	600	670	710	-	-
Ø O		65	98	122	150	185	205	260	300	375	440	510	-	-
P		75,5	105,5	142	156	182	225	250	275	335	370	445	-	-
Q		3x3x20	5x5x32	6x6x32	8x7x40	8x7x45	10x8x50	10x8x70	12x8x80	18x11x100	18x11x90	20x12x90	-	-
Ø R		-	38	55	-	72	80	100	-	-	-	-	-	-
S		-	6	6	-	6	10	10	-	-	-	-	-	-
T		5,5	8,5	12	6,5	6	8	10	15	25	25	20	-	-
T5		-	-	-	-	-	-	-	10	25	20	20	-	-
V		10	12	18	16	20	25	30	35	40	50	60	-	-
Ø W		36	48	65	80	100	130	150	170	265	240	300	-	-
Ø W5		-	-	-	-	-	-	-	159	265	220	245	-	-
Ø U		29	49	64	81	87	120	139	143	220	198	220	-	-
Y		70	97	130	150	176	217	240	260	310	350	424	-	-
Terminale/Head	1													
Ø a k6		20 h9	20	25	40	50	70	80	100	110	140	160	-	-
b		20	30	40	50	60	63	80	125	125	175	200	-	-
c		30	45	51	74	80	92	100	150	150	200	230	-	-
Terminale/Head	2													
Ø d		65	98	122	150	185	205	260	300	370	370	400	-	-
Ø e		45	75	85	105	140	155	200	225	270	280	310	-	-
Ø f		4 x Ø 7	4 x Ø14	4 x Ø17	4 x Ø21	4 x Ø26	4 x Ø27	4 x Ø33	4 x Ø35	4 x Ø45	6 x Ø52	8 x Ø52	-	-
r		8	12	18	20	20	25	30	30	75	75	90	-	-
s		20	30	40	50	60	63	80	70	125	125	150	-	-
Ø x		20	40	50	65	90	100	130	140	200	200	220	-	-
g		30	45	51	74	80	92	100	100	150	150	180	-	-
Terminale/Head	3													
h		15	30	39	50	60	63	80	125	125	175	200	-	-
i		M18x1,5	M22x1,5	M30x2	M40x3	M50x3	M70x3	M80x3	M100x5	M120x6	M140x6	M160x6	-	-
k		30	45	51	74	80	92	100	150	150	200	230	-	-
Terminale/Head	4													
L -0,2		20	30	42	60	75	90	105	120	140	160	180	-	-
m		50	70	105	130	150	175	220	300	360	360	400	-	-
n		30	50	75	100	120	140	160	200	240	280	320	-	-
Ø o H8		15	25	35	50	60	70	80	100	120	140	160	-	-
p1		50	60	79,5	104	110	134	160	225	265	245	270	-	-
Ø u		30	50	65	90	110	130	150	170	200	220	260	-	-
v		15	25	37,5	50	60	70	80	100	120	140	160	-	-
v1		35	45	67,5	80	90	105	140	200	240	220	240	-	-

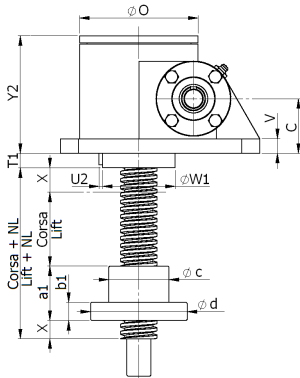
Tabella di scelta

Table of settings

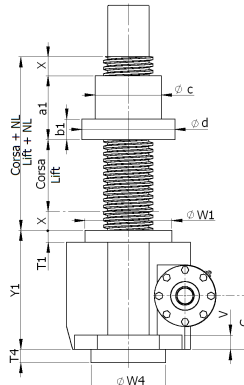
Grandezza\Size 12-420 A



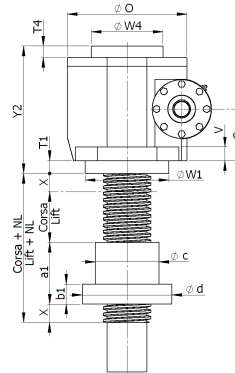
Grandezza\Size 8-420 B



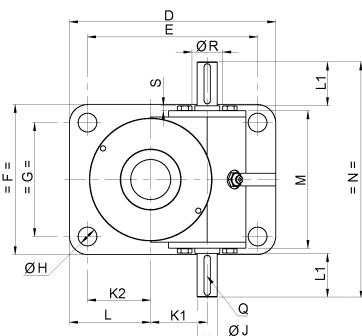
Grandezza\Size 600-800 A



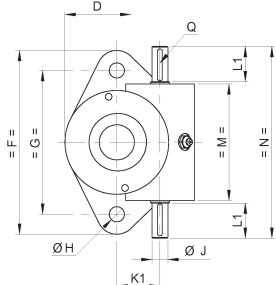
Grandezza\Size 600-800 B



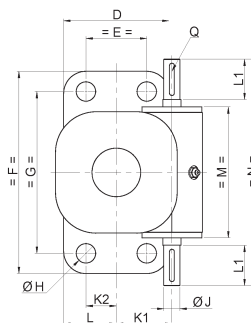
Grandezza\Size 35-400



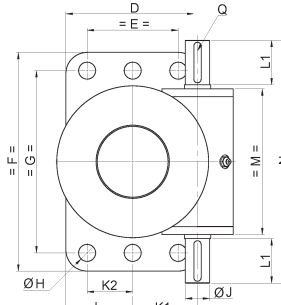
Grandezza\Size 12



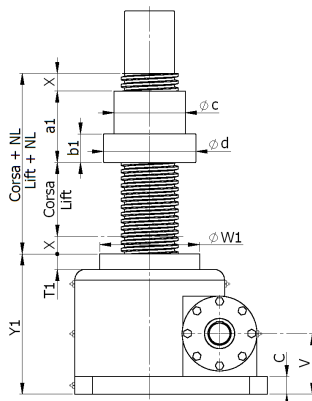
Grandezza\Size 600



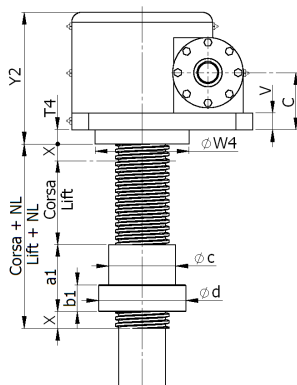
Grandezza\Size 800



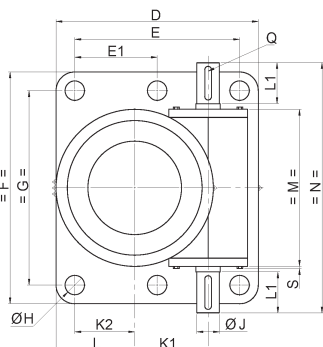
Grandezza\Size 1100-1600 A



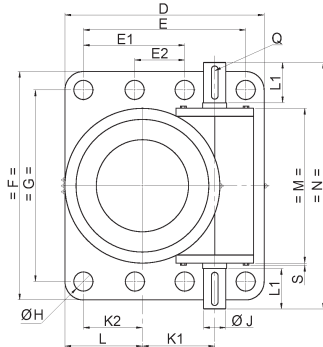
Grandezza\Size 1100-1600 B



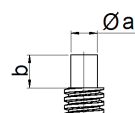
Grandezza\Size 1100



Grandezza\Size 1600



Testa\Head 1



Testa\Head 3

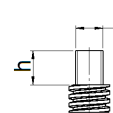
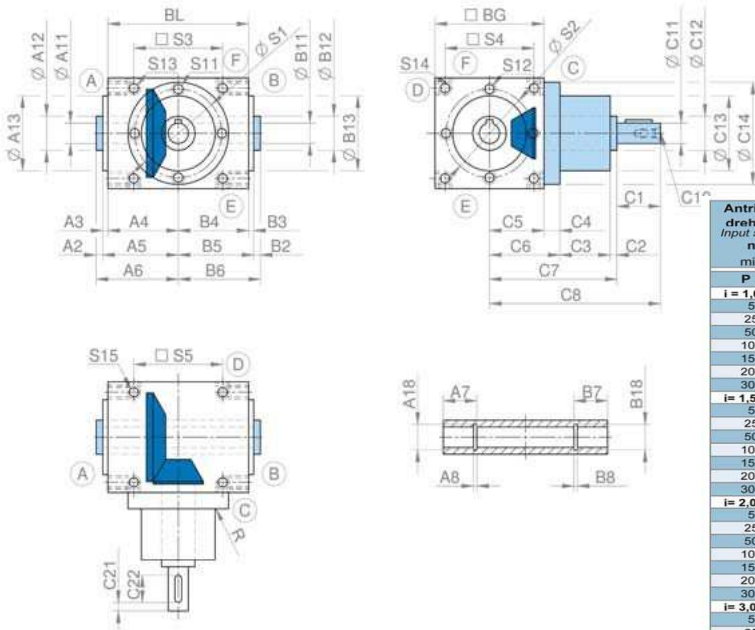


Tabella di scelta
Table of settings

Grandezza \ Size		12	35	70	120	220	300	420	600	820	1100	1600	2100	5000
Asta/Spindel Tr DIN103		Tr 20x6	Tr 30x6	Tr 40x7	Tr 60x12	Tr 65x12	Tr 90x16	Tr100x16	Tr120x16	Tr140x20	Tr160x20	Tr190x24	Tr220x28	Tr380x28
C		32	45	61,5	70	87	102	115	130	155	170	194	-	-
D		81,5	165	212	235	295	350	430	260	330	540	660	-	-
E		-	136	169	191	241	281	361	151	226	441	561	-	-
E1		-	-	-	-	-	-	-	-	-	220,5	331	-	-
E2		-	-	-	-	-	-	-	-	-	-	171	-	-
F		115	120	155	200	215	260	280	500	540	620	700	-	-
G		91	91	115	156	161	191	211	401	456	521	611	-	-
Ø H		10	15	18	22	29	36	36	49	46	54	54	-	-
Ø J		10 k6	16 k6	20 k6	25 k6	28 k6	34 k6	38 k6	40 k6	60m6	60 m6	70 m6	-	-
K1		27	45,2	56,2	66,8	72,5	97	120	137	160	196	225	-	-
K2		-	50,5	58,5	64	95,5	95,5	135,5	75,5	113	160,5	210,5	-	-
L		32,5	65	80	86	112,5	130	170	130	165	210	255	-	-
L1		22	-	-	47	52	60	80	100	110	110	110	-	-
M		73	111	132	185	214	221	265	324	360	420	490	-	-
N		120	190	228	280	322	355	430	560	600	670	710	-	-
NL + Corsa/Lift		72	85	100	125	150	170	205	255	300	300	340	-	-
Ø O		65	98	122	150	185	205	260	300	375	440	510	-	-
Q		3x3x20	5x5x32	6x6x32	8x7x40	8x7x45	10x8x50	10x8x70	12x8x80	18x11x100	18x11x90	20x12x90	-	-
Ø R		-	38	55	-	72	80	100	-	-	-	-	-	-
S		-	6	6	-	6	10	10	-	-	-	-	-	-
T1		18,5	26,5	30	34	39	52	45	29	16	33	40	-	-
T4		-	-	-	-	-	-	15	32	-	43	50	-	-
V		10	12	18	16	20	25	30	35	40	50	60	-	-
Ø W1		45	68	83	110	140	160	180	210	274	280	340	-	-
Ø W4		-	-	-	-	-	-	150	180	-	-	-	-	-
X		20	20	20	25	25	25	30	50	50	50	50	-	-
Y1		74	100	131	160	194	226	250	289	326	383	465	-	-
Y2		70	97	131	150	181	211	250	289	326	393	475	-	-
Chiocciola / Nut														
a1		32	45	60	75	100	120	145	155	200	200	240	-	-
b1		10	15	18	25	30	35	35	50	70	80	90	-	-
Ø c h9		40	50	70	90	90	130	150	160	180	200	240	-	-
Ø d		50	80	87	110	120	155	190	225	250	260	300	-	-
Terminale/Head	1													
a		20 h9	20	25	40	50	70	80	100	110	140	160	-	-
b		20	30	40	50	60	63	80	125	125	175	200	-	-
Terminale/Head	3													
h		15	30	39	50	60	63	80	125	125	175	200	-	-
i		M20x1,5	M22x1,5	M30x2	M40x3	M50x3	M70x3	M80x3	M100x5	M120x6	M140x6	M160x6	-	-



RISAM rimane sempre all'avanguardia nelle trasmissioni ed ora è pronta a commercializzare i rinvii angolari della società ARCUS. Una azienda Tedesca all'avanguardia nella costruzione di rinvii angolari, oltre alla versione ad albero cavo, versione ad albero sporgente, versioni motorizzate e speciali completano la vasta gamma di rinvii angolari.



Antriebsdrehzahl Input speed n ₁ min ⁻¹	Abtriebsdrehzahl Output speed n ₂ min ⁻¹	Größe / Size								
		K 065		K 090		K 120		K 140		
		P kW	T _{2N} Nm	T _{2max} Nm	P kW	T _{2N} Nm	T _{2max} Nm	P kW	T _{2N} Nm	T _{2max} Nm
P 1 Nm		2,2		4,2		7,1		10,8		
i = 1,0										
50	50	0,12	23	35	0,33	63	112	0,73	140	236
250	250	0,60	23	35	1,65	63	112	3,66	140	236
500	500	1,20	23	35	3,30	63	112	7,33	140	236
1000	1000	2,41	23	35	6,60	63	112	14,66	140	236
1500	1500	3,61	23	35	9,90	63	112	21,99	140	236
2000	2000	4,82	23	35	13,19	63	112	29,32	140	236
3000	3000	7,23	23	35	19,79	63	112	43,98	140	236
i = 1,5										
50	33	0,08	22	34	0,20	58	102	0,48	137	231
250	167	0,38	22	34	1,01	58	102	2,39	137	231
500	333	0,77	22	34	2,02	58	102	4,78	137	231
1000	667	1,54	22	34	4,05	58	102	9,56	137	231
1500	1000	2,30	22	34	6,07	58	102	14,35	137	231
2000	1333	3,07	22	34	8,10	58	102	19,13	137	231
3000	2000	4,61	22	34	12,15	58	102	28,69	137	231
i = 2,0										
50	25	0,05	21	32	0,14	55	92	0,35	132	213
250	125	0,27	21	32	0,72	55	92	1,73	132	213
500	500	0,55	21	32	1,44	55	92	3,46	132	213
1000	500	1,10	21	32	2,88	55	92	6,91	132	213
1500	750	1,65	21	32	4,32	55	92	10,37	132	213
2000	1000	2,20	21	32	5,76	55	92	13,82	132	213
3000	1500	3,30	21	32	8,64	55	92	20,73	132	213
i = 3,0										
50	17	0,03	18	27	0,08	45	75	0,20	115	185
250	83	0,16	18	27	0,39	45	75	1,00	115	185
500	167	0,31	18	27	0,79	45	75	2,01	115	185
1000	333	0,63	18	27	1,57	45	75	4,01	115	185
1500	500	0,94	18	27	2,36	45	75	6,02	115	185
2000	667	1,26	18	27	3,14	45	75	8,03	115	185
3000	1000	1,88	18	27	4,71	45	75	12,04	115	185
i = 4,0										
50	13	-	-	-	0,06	43	73	0,13	97	163
250	63	-	-	-	0,28	43	73	0,63	97	163
500	125	-	-	-	0,56	43	73	1,27	97	163
1000	250	-	-	-	1,13	43	73	2,54	97	163
1500	375	-	-	-	1,69	43	73	3,81	97	163
2000	500	-	-	-	2,25	43	73	5,08	97	163
3000	750	-	-	-	3,38	43	73	7,62	97	163
i = 5,0										
50	10	-	-	-	0,04	39	63	0,09	85	146
250	50	-	-	-	0,20	39	63	0,45	85	146
500	100	-	-	-	0,41	39	63	0,89	85	146
1000	200	-	-	-	0,82	39	63	1,78	85	146
1500	300	-	-	-	1,23	39	63	2,67	85	146
2000	400	-	-	-	1,63	39	63	3,56	85	146
3000	600	-	-	-	2,45	39	63	5,34	85	146
i = 6,0										
50	8	-	-	-	0,03	32	54	0,06	71	121
250	42	-	-	-	0,14	32	54	0,31	71	121
500	83	-	-	-	0,28	32	54	0,62	71	121
1000	167	-	-	-	0,56	32	54	1,24	71	121
1500	250	-	-	-	0,84	32	54	1,86	71	121
2000	333	-	-	-	1,12	32	54	2,48	71	121
3000	500	-	-	-	1,68	32	54	3,72	71	121

Größe Size	BG	BL	A2 B2	A3 B3	A4 B4	A5 B5	A6 B6	A7 B7	A8 B8	A11 B11	A12 B12	A13 B13	A18 B18
065	65	84	2	2	42	44	46	-	-	12 ^{H7}	20	44 ₁₇	-
090	90	110	4	3	55	58	62	-	-	18 ^{H7}	30	60 ₁₇	-
120	120	144	5	3	72	75	80	-	-	25 ^{H7}	40	80 ₁₇	-
140	140	164	2	3	82	85	87	18	1,3	32 ^{H7}	45	90 ₁₇	33,7
160	160	190	5	3	95	98	103	18	1,6	35 ^{H7}	55	110 ₁₇	37
200	200	234	4	4	117	121	125	18	1,85	42 ^{H7}	70	120 ₁₇	44,5
260	260	300	6	4	150	154	160	20	2,15	60 ^{H7}	80	160 ₁₇	63

Größe Size	C1	C2	C3	C4	C5	C6	C7	C8	C10 DIN 332	C11	C12	C13
065	26	2	30	9,5	32,5	42	74	100	DR M5	12 _{j6}	17	44 ₁₇
090	35	2	30	10	45	55	87	122	DR M6	18 _{j6}	25	60 ₁₇
120	45	2	40	15	60	75	117	162	DR M10	25 _{j6}	30	80 ₁₇
140	50	2	45	13	70	83	130	180	DR M12	32 _{j6}	40	95 ₁₇
160	60	2	55	15	80	95	152	212	DR M12	35 _{j6}	40	110 ₁₇
200	80	3	70	20	100	120	193	273	DR M16	42 _{j6}	55	120 ₁₇
260	110	5	115	20	130	150	270	380	DR M20	60 _{j6}	65	160 ₁₇

Größe Size	C14	C21	C22	S1 S2	S3 S4	S5	S11	S12	S13 S14 S15	R
065	64,5 ₁₇	3	20	54	54	45	M6x9	M6x9	M6x12	1
090	85 ₁₇	3,5	28	75	70	70	M8x10	M8x9	M8x15	1
120	113 ₁₇	2,5	40	100	100	100	M10x15	M10x11	M10x18	1
140	130 ₁₇	2,5	45	115	110	110	M10x13	M10x11	M10x18	1
160	150 ₁₇	5	50	135	120	120	M12x15	M12x15	M12x24	2
200	190 ₁₇	5	70	175	160	160	M12x20	M12x17	M12x24	3
260	250 ₁₇	5	100	230	220	220	M16x20	M16x20	M16x32	5

Antriebsdrehzahl Input speed n ₁ min ⁻¹	Abtriebsdrehzahl Output speed n ₂ min ⁻¹	Größe / Size								
		K 160		K 200		K 260				
		P kW	T _{2N} Nm	T _{2max} Nm	P kW	T _{2N} Nm	T _{2max} Nm	P kW	T _{2N} Nm	T _{2max} Nm
P 1 Nm		16,8		27		46				
i = 1,0										
50	50	2,09	400	680	4,03	770	1185	10,21	1950	2800
250	250	10,47	400	680	20,16	770	1185	51,05	1950	2800
500	500	20,94	400	680	40,31	770	1185	102,09	1950	2800
1000	1000	41,88	400	680	80,63	770	1185	204,19	1950	2800
1500	1500	62,83	400	680	120,94	770	1185	306,28	1950	2800
2000	2000	83,77	400	680	161,26	770	1185	408,38	1950	2800
3000	3000	125,65	400	680	-	-	-	-	-	-
i = 1,5										
50	33	1,33	380	650	2,67	765	1145	6,63	1900	2760
250	167	6,63	380	650	13,35	765	1145	33,16	1900	2760
500	333	13,26	380	650	26,70	765	1145	66,32	1900	2760
1000	667	26,53	380	650	53,40	765	1145	132,64	1900	2760
1500	1000	39,79	380	650	80,10	765	1145	198,96	1900	2760
2000	1333	53,05	380	650	106,81	765	1145	265,27	1900	2760
3000	2000	79,58	380	650	160,21	765	1145	397,91	1900	2760
i = 2,0										
50	25	0,96	365	630	1,94	740	1100	4,84	1850	2670
250	125	4,78	365	630	9,69	740	1100	24,21	1850	2670
500	250	9,55	365	630	19,37	740	1100	48,43	1850	2670
1000	500	19,11	365	630	38,74	740	1100	96,86	1850	2670
1500	750	28,66	365	630	58,12	740	1100	145,29	1850	2670
2000	1000	38,22	365	630	77,49	740	1100	193,72	1850	2670
3000	1500	57,33	365	630	116,23	740	1100	290,58	1850	2670
i = 3,0										
50	17	0,52	300	505	1,24	710	1060	2,88	1650	2800
250	83	2,62	300	505	6,20	710	1060	14,40	1650	2800
500	167	5,24	300	505	12,39	710	1060	28,80	1650	2800
1000	333									